

# sedus



**se:screen**

*Screens & Acoustics*





With our solutions, we support people in expressing their genius at work.

# Why se:screen?

The workplace is changing rapidly: It is becoming more open, more communicative and more agile. The office of the future is characterised by open space and flexible workplace models. Teamwork and spontaneous exchange are part of daily business life. Certain tasks, however, require some peace and quiet. So how can the necessary shielding and privacy be achieved? The enhanced elements of the se:screen family make screening very easy – the frame is slender, the size individually adaptable, the colour freely selectable. se:screen impresses with its slim design and endless possibilities for customisation. Whether large or small, free-standing or attached to a desk, with or without acoustic effect: se:screen can be individually tailored to suit any room and furniture.



With or without acoustic effect: the **unobtrusive appearance** of se:screen is always the same



## Height x width = a perfect fit

se:screen can be planned and manufactured with millimetre precision

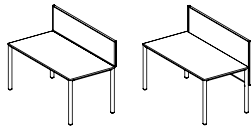


**Well organised:** se:screen comes with a choice of extras, such as **storage tray, note box and magnetic board**

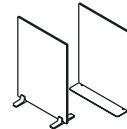
# Customised configuration

## Versions

Slim and smart design: se:screen is easily integrated into rooms and attached to desks.



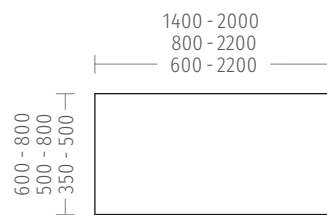
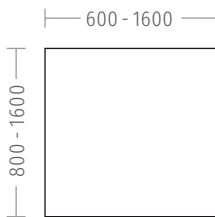
Attachment on or behind the desk



Partition or free-standing screen

## Measurements

The right size for every requirement: the height and width of se:screen can be planned to the exact millimetre.



Standard depth: 30 mm  
All measurements are in mm

## Connectors for interlinking screens

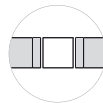
se:screen is a modular system which allows for multiple combinations.

The elements can easily be interlinked as desired by means of connectors.



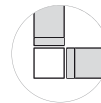
### 120° connection

For interlinking two screens at an angle of 120 degrees



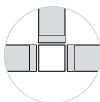
### Direct connection

For interlinking two screens straight



### 90° connection

For interlinking two screens at an angle of 90 degrees



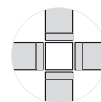
### T connection

For interlinking two screens straight and a third screen orthogonally



### Star connection

For interlinking three screens at 120-degree angles



### 4-sided connection

For interlinking four screens at 90-degree angles

## Foot options

The various foot options make se:screen stable and easily adaptable.



Stabiliser



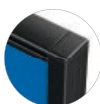
Symmetrical base plate



Asymmetrical base plate

## Frames

se:screen frames are available in black, white and white aluminium.



Black



White



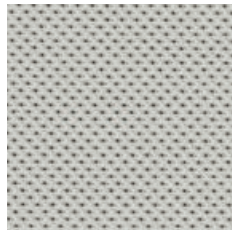
White aluminium

# Large range of colours

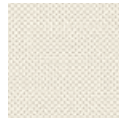
## Versions

The fabric cover is available in a range of different structures and colours.

### Atlantic Screen



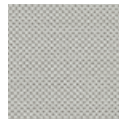
9AS\_S60095



9AS\_S60061



9AS\_S61105



9AS\_S60095



9AS\_S68050



9AS\_S61078



9AS\_S60011



9AS\_S67015



9AS\_S66063

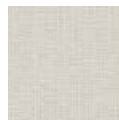


9AS\_S63034

### Xpress



9XP\_X60003



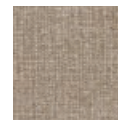
9XP\_X60162



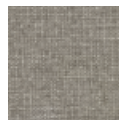
9XP\_X62002



9XP\_X66008



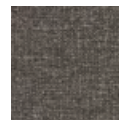
9XP\_X61183



9XP\_X60003



9XP\_X68002



9XP\_X68107

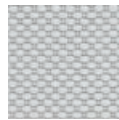


9XP\_X61003

### Nova



91P



91P



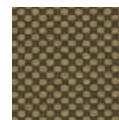
91S



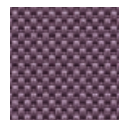
91N



91Q



91T

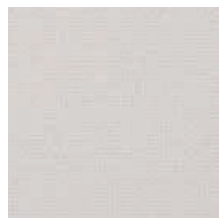


91E



91U

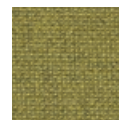
### Twist / Twist Melange



4TW\_T60076



4TW\_T60076



4TW\_T62066  
Melange



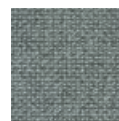
4TW\_T67004



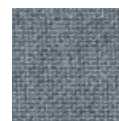
4TW\_T61104  
Melange



4TW\_T60076\_  
Melange



4TW\_T68118  
Melange



4TW\_T67004  
Melange



4TW\_T60004

This page shows only a small selection. More colours are available in the respective product collections.

“**se:screen**

*offers noise reduction and  
privacy and convinces with  
its timeless design.”*

Sedus Design Team



[www.sedus.com](http://www.sedus.com)

