

sedus

Free-standing partition walls and screens

se:wall





Concentration on productivity.

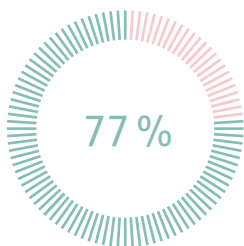


Communicative open spaces, team-oriented working and more intensive use of space characterise the evolution of today's world of space. However, these factors often conflict the basic needs of many people. They need quiet so that they can concentrate and therefore work productively.

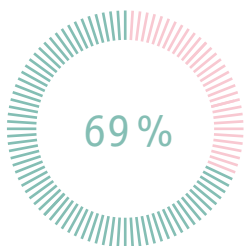
With the *se:wall* multi-functional and effective acoustic partition wall and screen system, communication and concentration can be optimally reconciled. Its slender and visually light design blends harmoniously into the office landscape and uses its practical functionalities to facilitate the workplace organisation.

Talking is allowed.

Where hard surfaces such as exposed concrete and glass ensure that there is no shortage of echoes and bustling open spaces dominate the office lay-out, *se:wall* displays its particular strength. With a sound adsorption capability which meets the requirements of the highest Class A, *se:wall* significantly reduces the perceived noise level and at the same time enhances the room acoustics. Collaboration in large rooms becomes much more pleasant and the atmosphere in the office is improved in all respects.



77% of all employees prefer quiet if they have to concentrate.



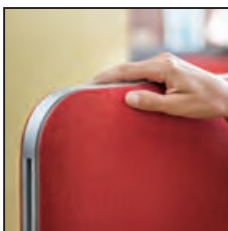
69% are dissatisfied with the noise level at their workplace.

Source: Gensler U.S. Workplace Survey 2013

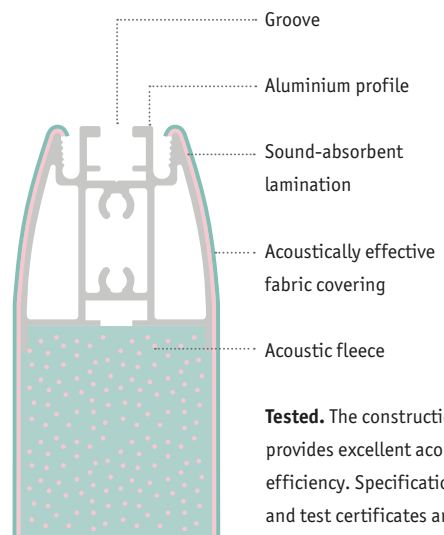




Shhh. Conversations are among those noises in the office which detract the most from work needing concentration. *Se:wall* significantly reduces sound transmission in the room and therefore makes working together considerably easier.



Attention. A selection of high-performance, sound absorbent materials make a further contribution to the acoustic efficiency of *se:wall*.



Tested. The construction provides excellent acoustic efficiency. Specifications and test certificates are available upon request.

Collectively and separately.

Bench workplaces offer many advantages, starting with the efficient use of space, moving on to team-working and finally to consolidation of the sense of unity of purpose. But with *se:wall* screens, privacy is also protected - without hindering communication. As well as practical standard heights and widths, customised screen sizes are also available and can be selected to match your requirements down to the last millimetre. This is how *se:wall* enables every desk surface to be optimally sub-divided.

Tailored to your needs

The screens are available in two standard heights (350 and 500 mm) and eight standard widths (600 to 2000 mm). Customised heights and widths can be ordered within these ranges.



Height 350 mm



Height 500 mm

Universal. *se:wall* screens can be simply and securely fitted onto all Sedus desk programmes.





Expandable. The screens can be extended by means of practical attachments, to provide visual screening and acoustic protection in exactly those places where the circumstances in the office demand additional privacy or quiet. And they can also be fitted at any subsequent time.



Focussed on concentration.

se:wall screens can also be installed along the far edge of a desk and are therefore an ideal means of shielding quiet workplaces from more busy areas. Double workplaces, too, can be separated with this version - without physically moving them apart. It is also possible to install them on desks which are adjustable in height such as the Sedus *temptation ci*, effectively screening the workplace whatever height is selected.



Height 650 mm

Height 800 mm

Generously sized. The screens are available in heights from 500 to 800 mm, each in six different widths from 600 to 2000 mm. Customised sizes can also be ordered within these ranges.



Creative. Reminders etc. or notes of spontaneous ideas can be pinned onto the fabric covering.



Attractive. The magnetic board brings order to the notepad - or provides a place for personal items such as photos and post-cards.



Hooks at the ready. Double coat-hangers offer sufficient space for coats or bags so that they can be kept within immediate reach.





Order. A whole range of accessories can be attached to the central organisation rail in a second - or moved along it as required.



Ideal. Up to two 24 inch screens can be securely attached to the swivelling monitor support at an ergonomic working height, saving yet more space.



Storage. Trays for pens and documents bring order to the desk - without taking up space on the desk itself.

To hand. An electric supply area with a magnetic surface and storage space provides a plug and two USB charging points within easy reach.





Good neighbours.

In open plan offices or open spaces, staff working next to each other can often be doing incompatible jobs. *se:wall* partition walls ensure that no-one disturbs their neighbour. Acoustically effective and attractively designed, the individual partition walls blend harmoniously together. They form fluid transition points in the room and become highly attractively designed, and stable structural units. The precision, rounded frames with the functional rail lend a clear shape to each panel along with a slender appearance, forming a conscious contrast to the soft, seamless, fabric-covered surfaces.

Attractive. The harmoniously proportioned surfaces taper towards the edges and are enclosed by a narrow aluminium rail which frames them. Their appearance in the room is therefore one of slenderness and shapeliness at the same time.



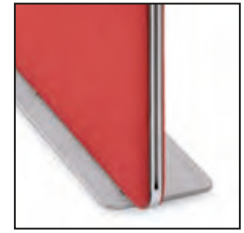
Foot



Foot support



Floor plate



Asymmetrical floor plate

Stable. A total of four attractive support variants are available in white, black and white aluminium, all of which blend well with the reduced stylistic language.



Height 3 binders, 1148 mm



Height 4 binders, 1498 mm

Modular. The height of the free-standing partition walls is three or four binders at the customer's option. Their widths range from 600 to 1600 mm in six steps. Within these dimensions the height and width of the partition walls can also be selected down to the last millimetre to match the customer's requirements.



Enclosed. Busy areas, such as those around copiers or printers can be enclosed by *se:wall*, thus significantly reducing noise emissions at the same time as providing visual benefits.



Combined. In an open space environment *se:wall* can create screened individual workplaces - for example for staff operating a service hotline whose phone conversations must not be allowed to disturb those around them.



Opportunity knocks.

Se:wall free standing partition walls offer optical advantages as well as visual and acoustic protection. Irrespective of the overall conditions in the room, the sparing but yet homely design creates a pleasant atmosphere and therefore enhances the environment. With a wide selection of covering fabrics and colours *se:wall* can also be adapted to suit furnishing styles, colour schemes or corporate identities.



Two plugs at the base



Plug in electric supply column, two in both 4 and 3 binder height screens



Detail

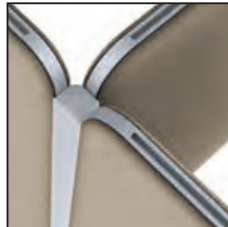
Supplies. The connectors are available with electric power supplies which bring power to wherever it is needed.



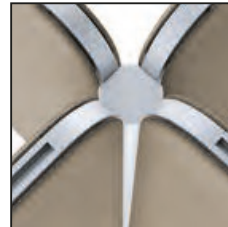
120° angle



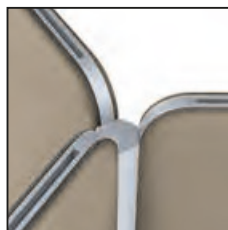
90° angle



T connection



Cross connection



Star connection



Wall abutment profile



Hinged connection

Contact-friendly. Six different connections allow a free choice of space-saving sequence of linked arrangements.

Adaptable. The connection with flexible hinges enables individual screens to be simply and rapidly rearranged by hand.



Melamine intermediate panel



Plexiglass intermediate panel

Connecting. By using rectangular connecting panels made from melamine, like wood or plexiglass, the partition walls can be elegantly aligned with each other.



Company:

Sedus se:wall

Sedus operates globally in accordance with the principles of the UN Global Compact on Human Rights, employment standards, environmental protection and combating corruption.



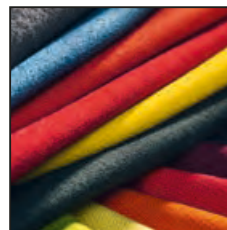


Sustainability down to the last detail.

Sustainability and “Made in Germany” quality have been key company principles at Sedus for more than 50 years. Principles which the Sedus *se:wall* also embody and which are reflected in a recycling-oriented product design, ecologically tested materials, a manufacturing process which consciously minimises resource and energy consumption, and which is permanently subject to quality tests.

One result for example is that re-used materials are preferred in the manufacture of *se:wall*. In addition, as no adhesives are used, all materials which make up *se:wall* can be separated from each other and therefore almost 100% can be recycled.

More information is available at
www.sedus.com



Resistant. Fabric quality which is not only durable, but also exemplary in terms of tear and chemical resistance.



Gentle protection. For surface finishing and protection against rust, Sedus does without paint, instead using powder coating which is more compatible with the environment.

sedus