

# Jetson L2





## Jetson L2

Jetson L2 is a huddle space for two people, perfect to talk and debate, free from distractions. Thanks to adjustable seats and shelves to decorate with books, posters, and plants, everyone can feel at home here. The ventilation exchanges air every two minutes, keeping your minds sharp and your ideas fresh.

Jetson is a family of universal acoustic pods designed to make everyone's work joyful and fruitful. It's truly people-focused: comfortable and customizable through add-on sets to meet your need and vision. Made of extruded aluminum, which makes it the lightest and most environmentally-friendly pod on the market. With its durable construction, no-hassle assembly, effective sound attenuation, and attractive price, Jetson will introduce the benefits of acoustic pods to all.

### FUNCTION

---

Meeting, collaboration or focused work

### ACOUSTICS

---

Insulation

### USAGE

---

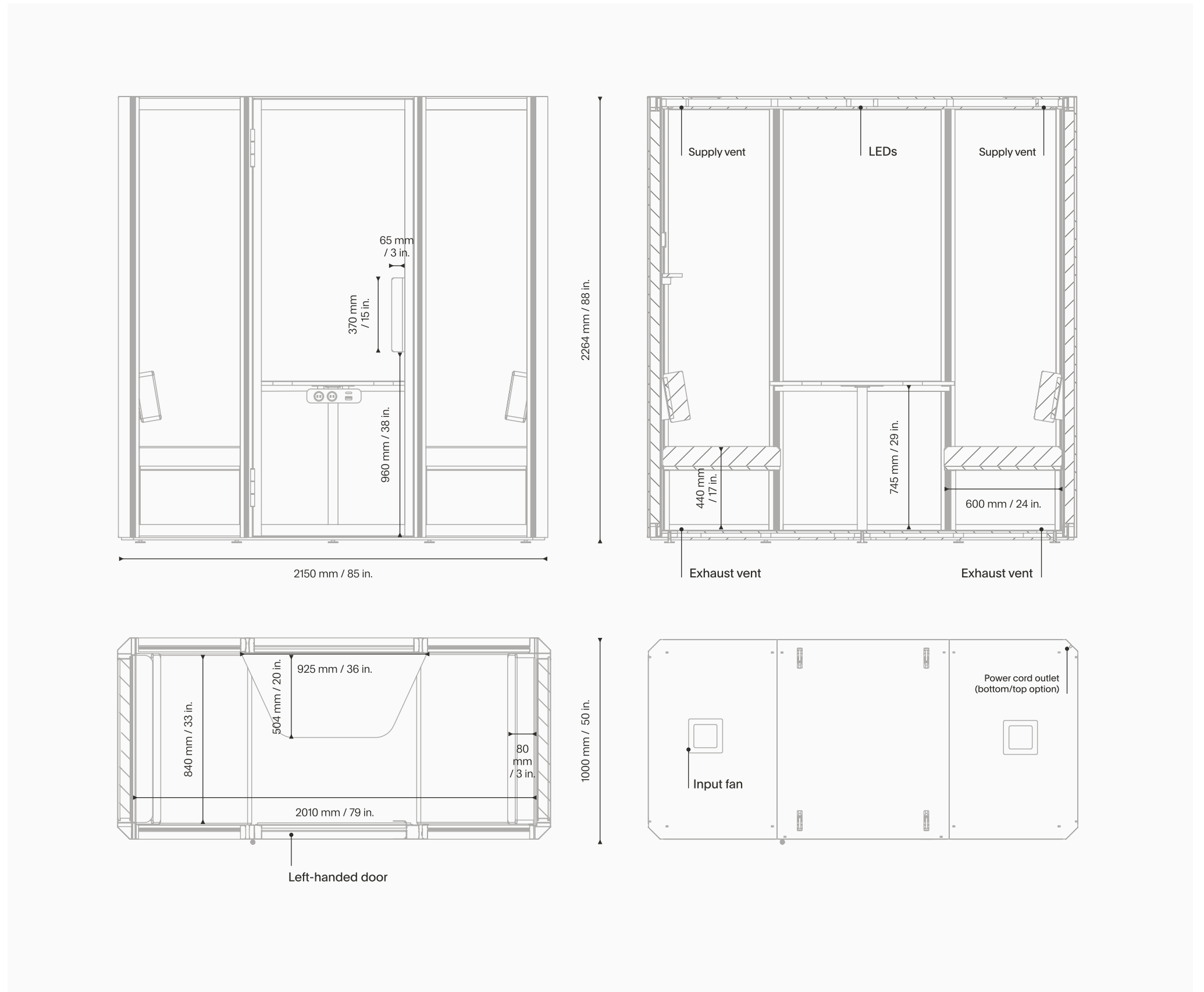
Open space

Reception

Breakout area

Other public spaces

# Dimensions, weight & features



**DIMENSIONS [MM | IN.]**

**EXTERIOR / INTERIOR**

**WEIGHT [KG | LBS]**

Width	2150 / 2010   85 / 79	Pod / with packaging	373 / 430   822 / 948
Depth	1000 / 860   40 / 34 + 800   32 with an open door	Seating / total load	12,5 / 180   28 / 396.8
Height	2264 / 2102   88 / 83	Tabletop / total load	11 / 30   24 / 66.1
Tabletop [w x d x h]	925 × 504 × 745 36 × 20 × 29	Shallow shelf / total load	1,5 / 3   3 / 6.6
		Display rail	1,4   3

# Technical data

## ACOUSTIC RESULTS AND VENTILATION

Sound insulation	up to 44,7 dB
Reverberation time	0,2 s
Nominal airflow	365 m <sup>3</sup> /h
Fan noise outside / inside	≤36 dB / ≤38 dB

## POWER SUPPLY AND CONSUMPTION

Working (fan, LEDs)	40 W
Power supply voltage	220-240 / 100-120 VAC, 50-60 Hz
Power sockets in a mediaport	2
USB fast charger in a mediaport	TUF A+C 30 W, 5 V DC
LAN port	Posiibility to route the LAN cable
Available socket types	FR / DE / UK / US / CH / AU / DK* / IT*

\*The appearance of the media port may differ from that shown in the renderings. Parameters and features remain unchanged.

## COMPOSITION

Aluminium structure and steel elements  
 Plywood and melamine faced chipboard  
 Isolating and absorbing materials  
 Tempered glass  
 Felt

## STANDARD EQUIPMENT SET

Ventilation system  
 LED lighting  
 Occupancy sensor  
 Media port with 2 power and A+C USB sockets  
 Profiled tabletop  
 2× sofa with height-adjustable backrest  
 Shallow shelf with display rail and magnet  
 2× wall hook  
 Power cord 3 m | 118 in.

## CERTIFICATES AND TESTS

ISO 14001, ISO 9001  
 VOC and Formaldehyde tested  
 Speech reduction tested  
 Reaction to fire tested

## OPTIONAL EQUIPMENT

Monitor hanger  
 838 × 429 mm | 33 × 17 in.  
 Max load: 50 kg | 110 lbs  
 VESA standard 100/200/300



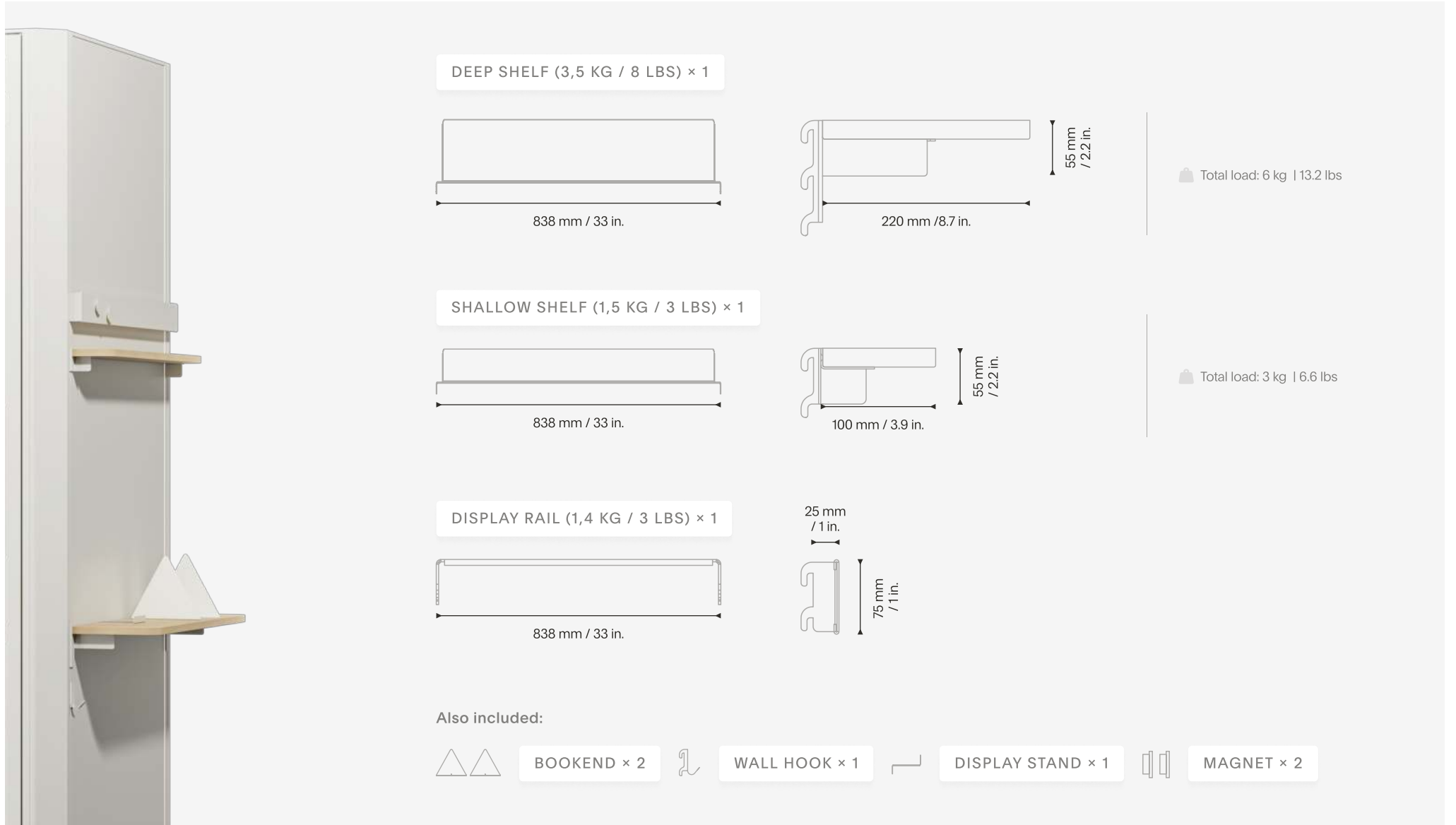
0%  
Formaldehyde  
VOC tested



# Add-on sets

## Library set

Weight / with packaging 6,5 / 8 kg | 14 / 18 lbs



**DEEP SHELF (3,5 KG / 8 LBS) × 1**

838 mm / 33 in.

220 mm / 8.7 in.

55 mm / 2.2 in.

Total load: 6 kg | 13.2 lbs

**SHALLOW SHELF (1,5 KG / 3 LBS) × 1**

838 mm / 33 in.

100 mm / 3.9 in.

55 mm / 2.2 in.

Total load: 3 kg | 6.6 lbs

**DISPLAY RAIL (1,4 KG / 3 LBS) × 1**

838 mm / 33 in.

25 mm / 1 in.

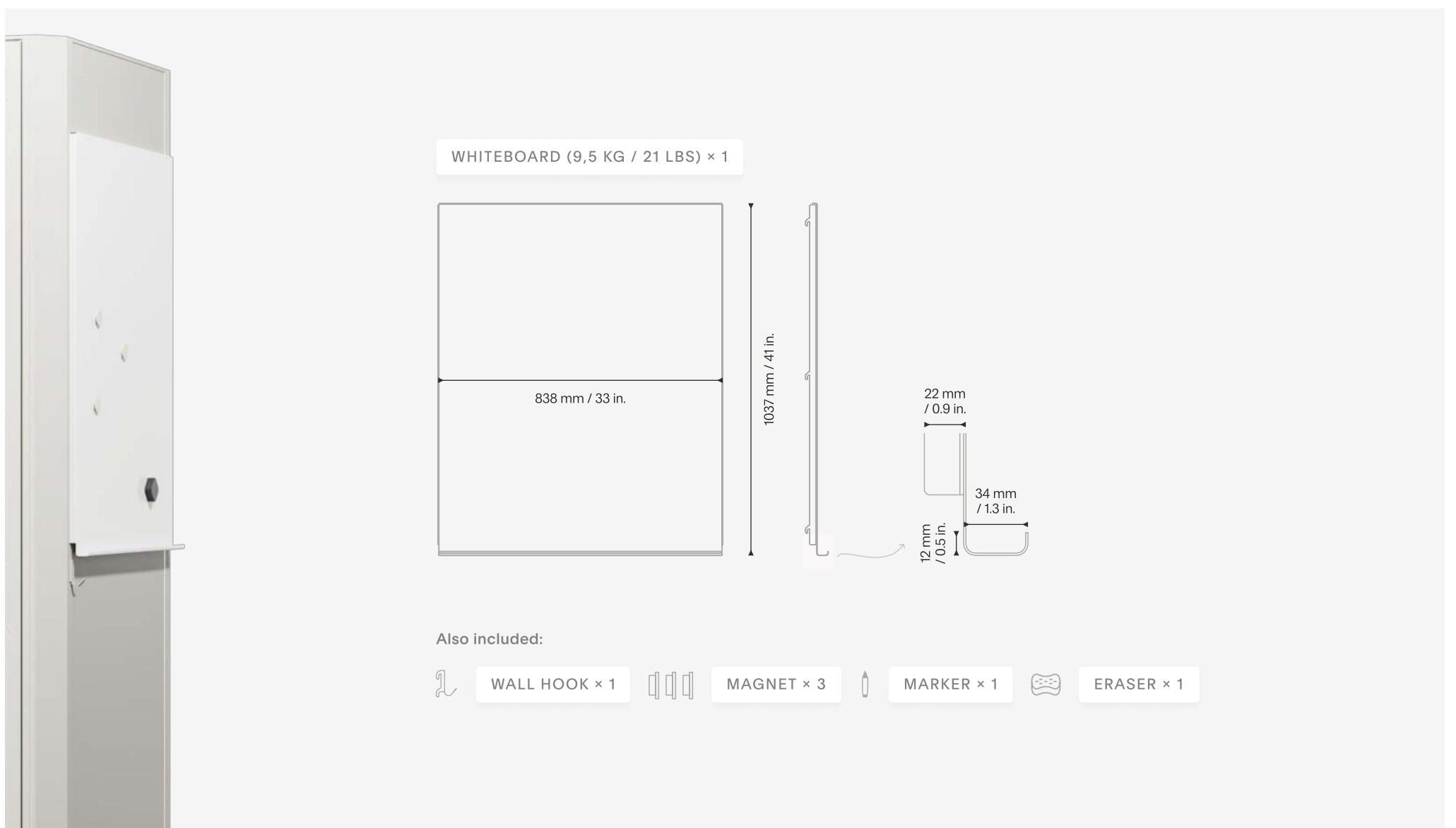
75 mm / 1 in.

Also included:

- BOOKEND × 2
- WALL HOOK × 1
- DISPLAY STAND × 1
- MAGNET × 2

## Note set

Weight / with packaging 10 / 12 kg | 22 / 26 lbs



**WHITEBOARD (9,5 KG / 21 LBS) × 1**

838 mm / 33 in.

1037 mm / 41 in.

22 mm / 0.9 in.

34 mm / 1.3 in.

12 mm / 0.5 in.

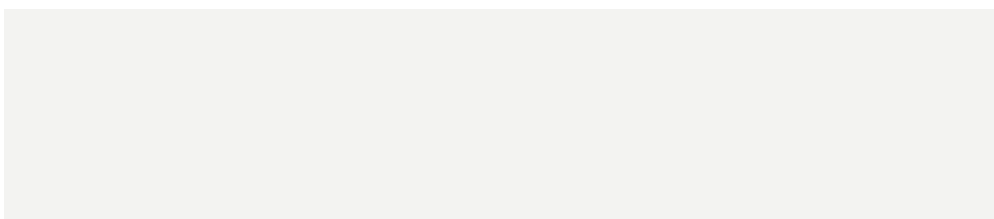
Also included:

- WALL HOOK × 1
- MAGNET × 3
- MARKER × 1
- ERASER × 1

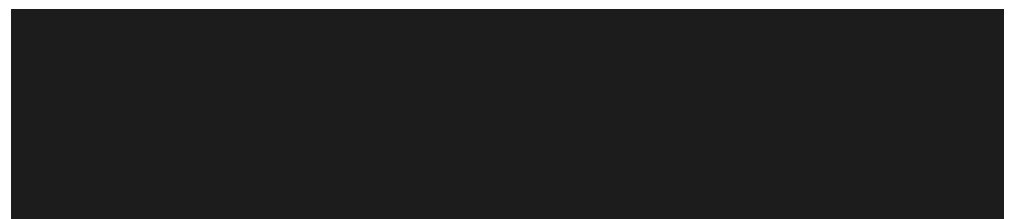
# Finishes overview



## 1 EXTERIOR WALLS AND FRAME



Moon White, PANTONE GREY 403051



Void Black, NCS S8500-N

## 2 INTERIOR WALLS AND CEILING



Light gray felt

## 3 TABLETOP AND SHELVES



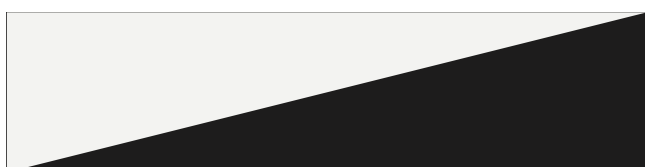
Oak wood melamine, H1334 ST9

## 4 SEATING UPHOLSTERY



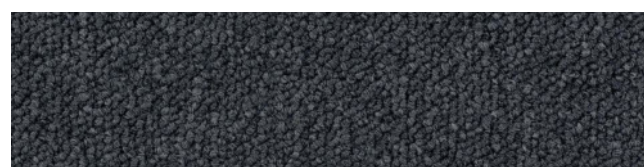
Gabriel Chili, 60115

## 5 BOOKENDS AND MAGNETS



Matching walls color

## 6 FLOOR



Dark gray carpet