

Jetson L4





Jetson L4

Jetson L4 is a huddle space for up to four people, perfect to talk and debate, free from distractions. Thanks to adjustable seats and shelves to decorate with books, posters, and plants, everyone can feel at home here. The ventilation exchanges air inside almost 40 times an hour to keep users' minds sharp and ideas fresh.

Jetson is a family of universal acoustic pods designed to make everyone's work joyful and fruitful. It's truly people-focused: comfortable and customizable through add-on sets to meet your need and vision. Made of extruded aluminum, which makes it the lightest and most environmentally-friendly pod on the market. With its durable construction, no-hassle assembly, effective sound attenuation, and attractive price, Jetson will introduce the benefits of acoustic pods to all.

FUNCTION

Meeting, collaboration or focused work

ACOUSTICS

Insulation

USAGE

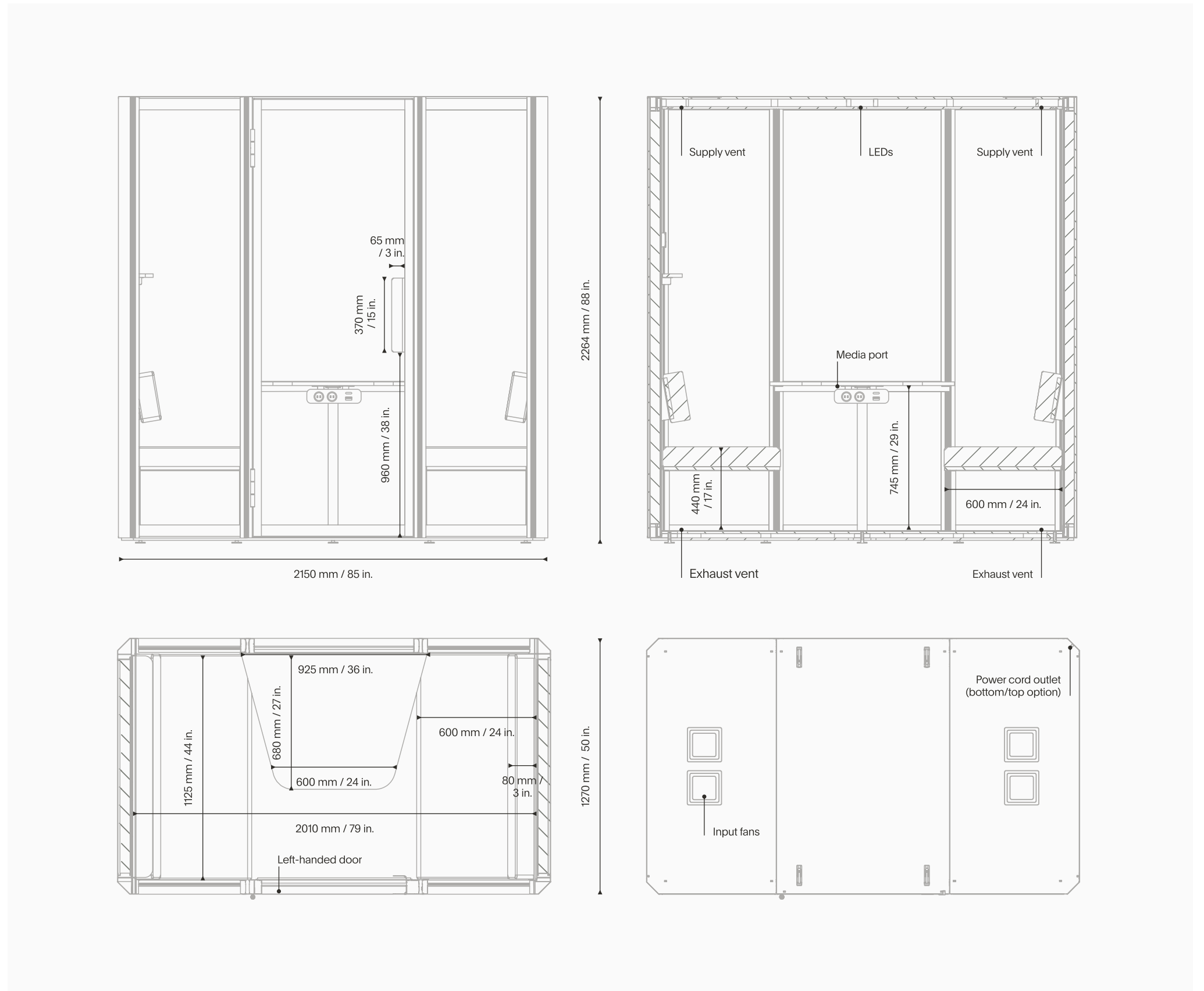
Open space

Reception

Breakout area

Other public spaces

Dimensions, weight & features



DIMENSIONS [MM IN.]	EXTERIOR / INTERIOR	WEIGHT [KG LBS]
Width	2150 / 2010 85 / 79	Pod / with packaging 460 / 515 1014 / 1135
Depth	1270 / 1125 50 / 44 + 800 32 with an open door	Seating / total load 25 / 180 55 / 396.8
Height	2264 / 2102 88 / 83	Tabletop / total load 11 / 40 24 / 88.2
Tabletop [w x d x h]	925 × 680 × 745 36 × 27 × 29	Shallow shelf / total load 2,6 / 3 5,7 / 6.6
		Display rail 1,8 3,9

Technical data

ACOUSTIC RESULTS AND VENTILATION

Sound insulation	up to 44,7 dB
Reverberation time	0,2 s
Nominal airflow	730 m ³ /h
Fan noise outside / inside	≤39 dB / ≤38 dB

POWER SUPPLY AND CONSUMPTION

Working (fan, LEDs)	43,5 W
Power supply voltage	220-240 / 100-120 VAC, 50-60 Hz
Power sockets in a mediaport	2
USB fast charger in a mediaport	TUF A+C 30 W, 5 V DC
LAN port	Posiibility to route the LAN cable
Available socket types	FR / DE / UK / US / CH / AU / DK* / IT*

*The appearance of the media port may differ from that shown in the renderings. Parameters and features remain unchanged.

COMPOSITION

Aluminium structure and steel elements
 Plywood and melamine faced chipboard
 Isolating and absorbing materials
 Tempered glass
 Felt

STANDARD EQUIPMENT SET

Ventilation system
 LED lighting
 Occupancy sensor
 Media port with 2 power and A+C USB sockets
 Profiled tabletop
 2× sofa with height-adjustable backrest
 Shallow shelf with display rail and magnet
 2× wall hook
 Power cord 3 m | 118 in.

CERTIFICATES AND TESTS

ISO 14001, ISO 9001
 VOC and Formaldehyde tested
 Speech reduction tested
 Reaction to fire tested

OPTIONAL EQUIPMENT

Monitor hanger
 838 × 429 mm | 33 × 17 in.
 Max load: 50 kg | 110 lbs
 VESA standard 100/200/300



0%
Formaldehyde
VOC tested



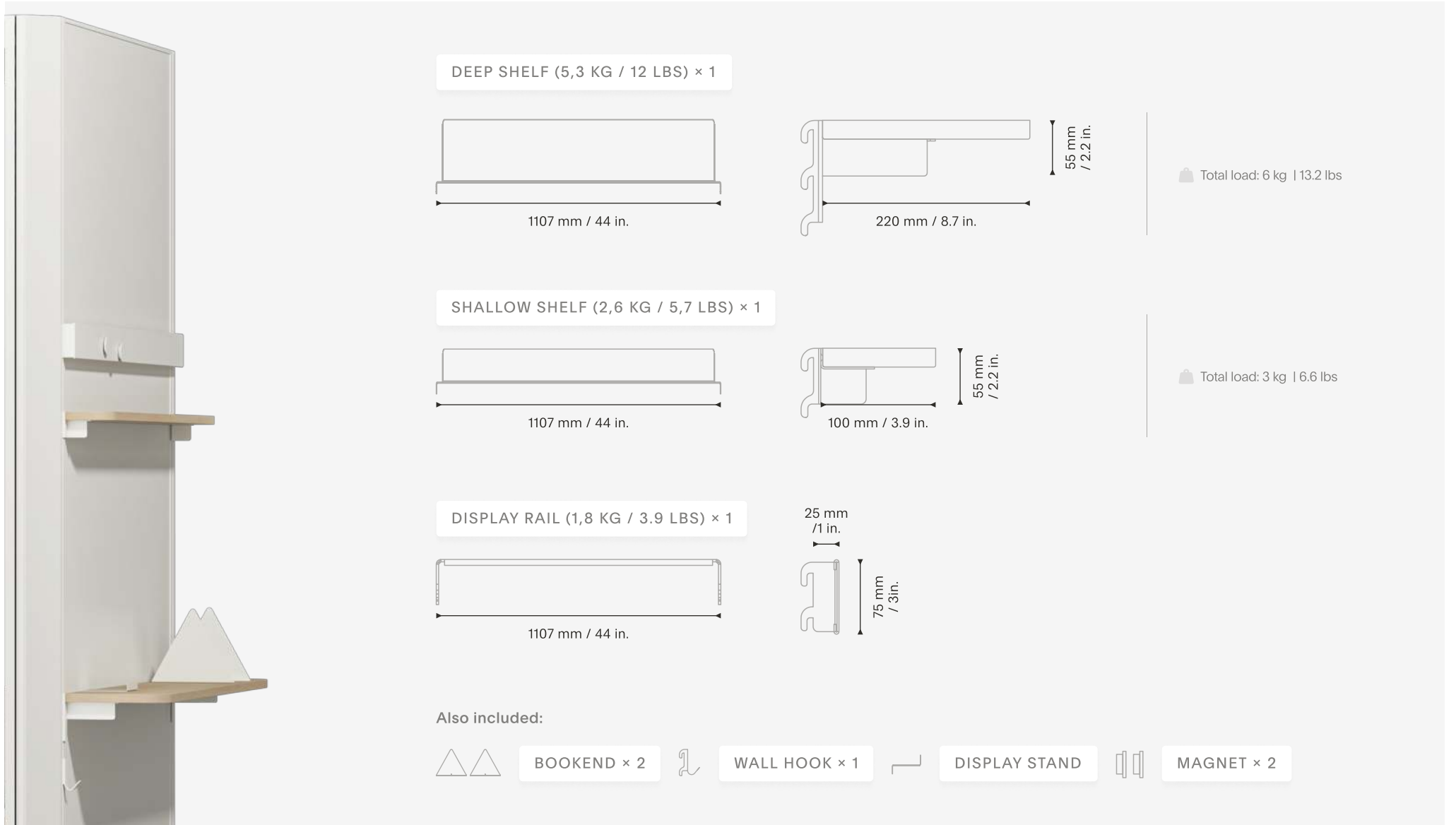
CE



Add-on sets

Library set

Weight / weight with packaging 11 / 12,8 kg 24 / 28 lbs



DEEP SHELF (5,3 KG / 12 LBS) × 1

1107 mm / 44 in.

220 mm / 8.7 in.

55 mm / 2.2 in.

Total load: 6 kg | 13.2 lbs

SHALLOW SHELF (2,6 KG / 5,7 LBS) × 1

1107 mm / 44 in.

100 mm / 3.9 in.

55 mm / 2.2 in.

Total load: 3 kg | 6.6 lbs

DISPLAY RAIL (1,8 KG / 3.9 LBS) × 1

1107 mm / 44 in.

25 mm / 1 in.

75 mm / 3 in.

Also included:

BOOKEND × 2

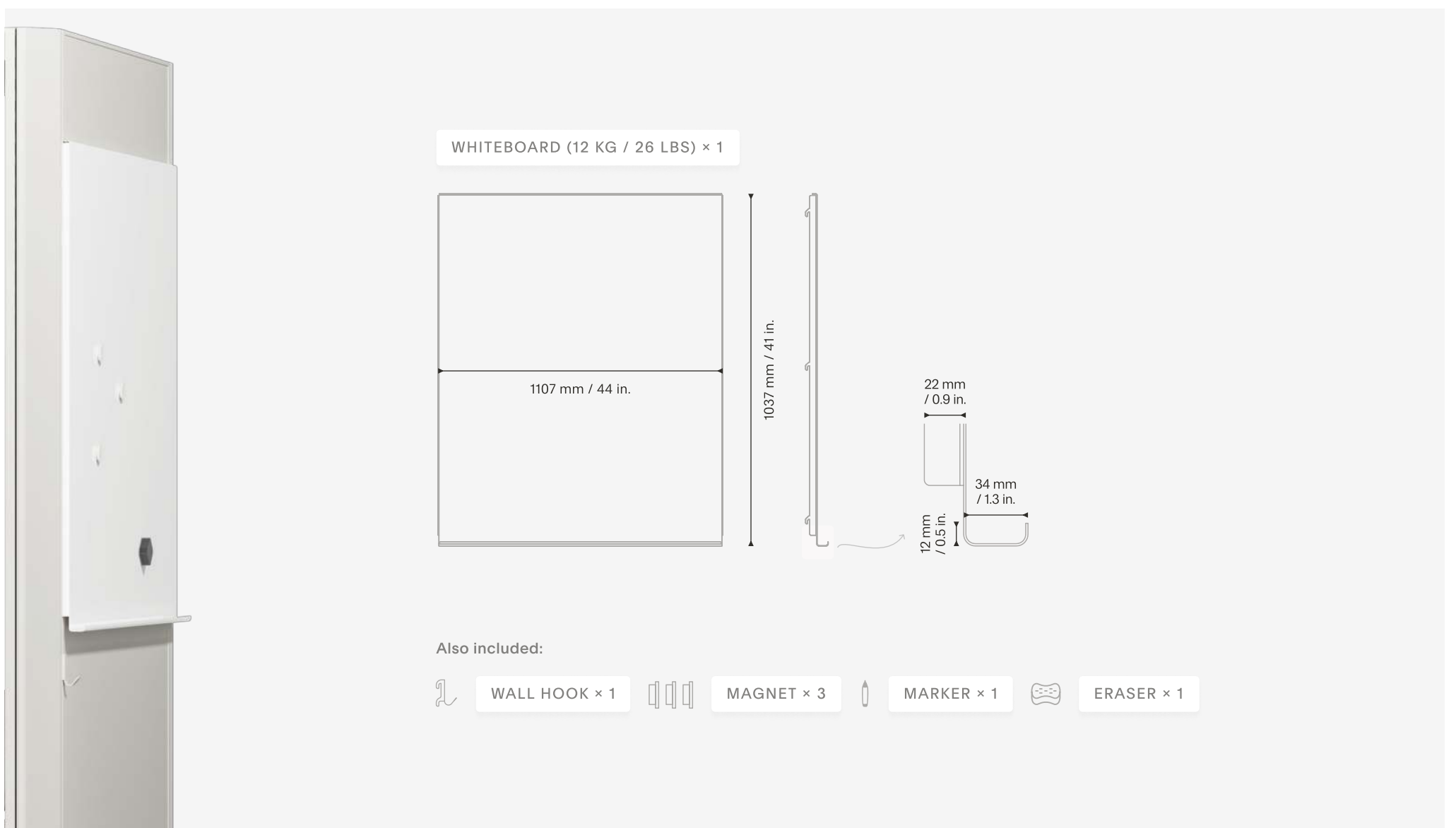
WALL HOOK × 1

DISPLAY STAND

MAGNET × 2

Note set

Weight / weight with packaging 12,5 / 15 kg 28 / 33 lbs



WHITEBOARD (12 KG / 26 LBS) × 1

1107 mm / 44 in.

1037 mm / 41 in.

22 mm / 0.9 in.

34 mm / 1.3 in.

12 mm / 0.5 in.

Also included:

WALL HOOK × 1

MAGNET × 3

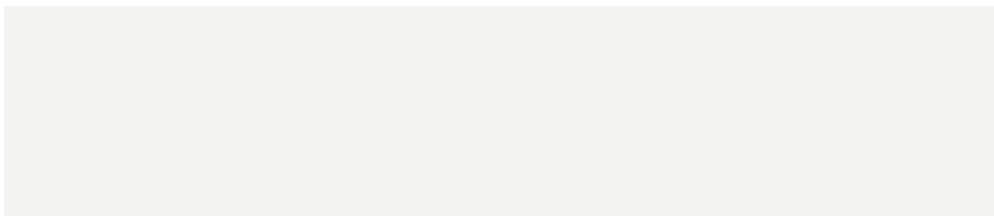
MARKER × 1

ERASER × 1

Finishes overview



1 EXTERIOR WALLS AND FRAME



Moon White, PANTONE GREY 403051



Void Black, NCS S8500-N

2 INTERIOR WALLS AND CEILING



Light gray felt

3 TABLETOP AND SHELVES



Oak wood melamine, H1334 ST9

4 SEATING UPHOLSTERY



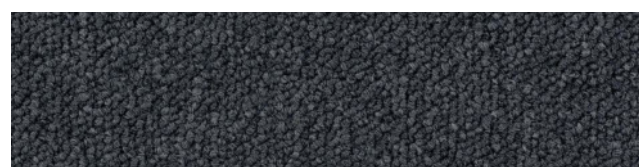
Gabriel Chili, 60115

5 BOOKENDS AND MAGNETS



Matching walls color

6 FLOOR



Dark gray carpet